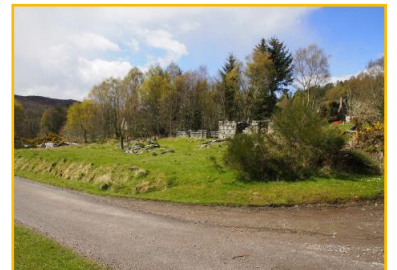




## Building Plot, The Old Post Office, Abriachan, IV3 8LE

Located in the Hills Above Loch Ness Appreciating an Elevated Location with Superb Views

Extending to Approximately 0.39 acre



Offers over £95,000

## DESCRIPTION

Extending to approximately 0.39 acre, this plot previously had detailed planning permission granted (12/03186/FUL) for the erection of a detached 3 bedroom property as shown below. Set in an elevated location, the property will enjoy a superb aspect with outlook across the surrounding countryside to Loch Ness beyond. Services are believed to be close by.

## LOCATION

This plot enjoys a favourable and peaceful aspect, located in the hills above Loch Ness and appreciates views across the surrounding countryside to Loch Ness in the distance. Set close to the Great Glen Way, there are pleasant woodland walks to be had nearby. Drumnadrochit is some 7 miles away and is a thriving tourist destination. Being home to the Loch Ness Monster Exhibition Centre, the village offers a host of outdoor activities including boat trips, fishing, horse riding, walking etc. The world famous Loch Ness and Urquhart Castle with visitor centre is also a short drive away. Village amenities in Drumnadrochit include general store, post office, GP surgery, primary and second schools as well as a selection of cafés and restaurants.

## DIRECTIONS

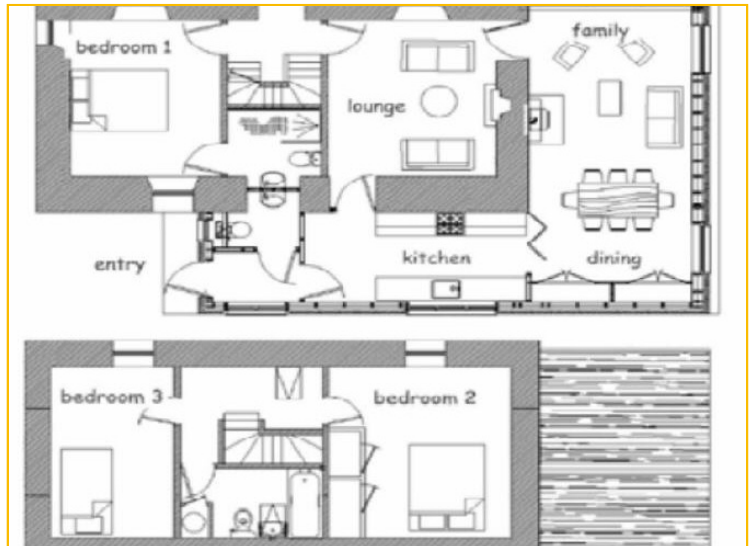
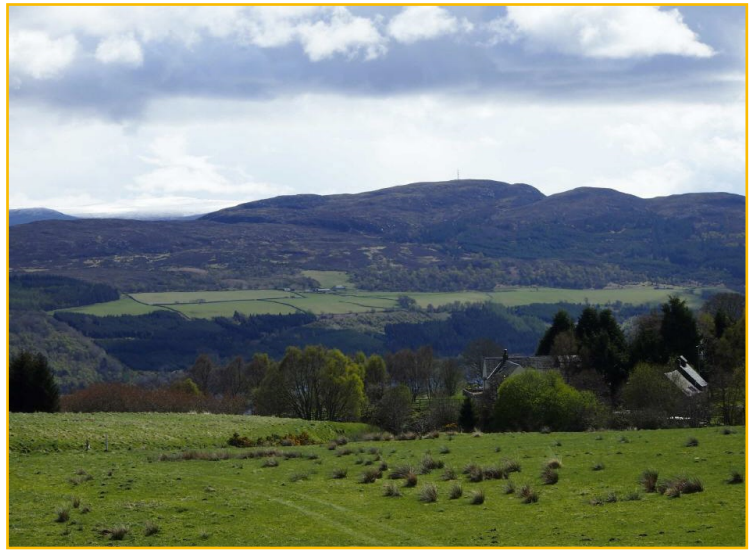
From Inverness, follow the A82 west towards Drumnadrochit passing through, Dochfour and Lochend. Shortly after passing Lochend, take the right hand turn off sign posted for Abriachan and follow the road up the hill. Pass the forestry track on the left and take the next turning to the right. Follow this road along and the plot is situated before the first house on the left and will be clearly sign posted.

## VIEWING

By visiting the site - no appointment necessary

## HSPC REFERENCE

50883



Inverness Office: York House, 20 Church Street, Inverness, IV1 1ED  
Telephone: 01463 253 911 | Fax: 01463 711 083  
Ullapool Office: Village Hall, Ullapool  
Telephone: 07780 600 218 (Monday & Wednesdays & by appointment)  
[www.andersonshaw.com](http://www.andersonshaw.com) | [property@solicitorsinverness.com](mailto:property@solicitorsinverness.com)

The above particulars, although believed to be correct, are not guaranteed, and any measurements stated therein are approximate only. Purchasers should note that the Selling Agents have NOT tested any of the electrical items or mechanical equipment (e.g. oven, central heating system, etc.) included in the sale. Any photographs used are purely illustrative and may demonstrate only the surrounds. They are NOT therefore to be taken as indicative of the extent of the property, or that the photographs are taken from within the boundaries of the property, or what it included in the sale.

